

PRATT COMBINATION SHOWER WITH TRIPLE NOZZLE EYE & FACE WASH, BOWL & FOOT TREADLE

THIS COMBINATION SHOWER IS DESIGNED TO OPERATE AS AN INDIVIDUAL SHOWER OR EYE AND FACE WASH OR BOTH SIMULTANEOUSLY.

It is constructed mainly of 304 stainless steel, with 316 stainless steel ball valves and threaded components, and AES plastic eye-face wash nozzles including 6 aerators and self-closing dust covers. Includes foot treadle for the eye-face wash. It is suitable for both indoor and outdoor applications.

The shower outlet also includes a 90LPM flow regulator, and the eye-face wash incorporates individual flow adjustment to provide a balanced flow output.



SHOWER HEAD



FLOW REGULATOR



**EYE-FACE
WASH NOZZLES**



**AERATOR
ASSEMBLY**



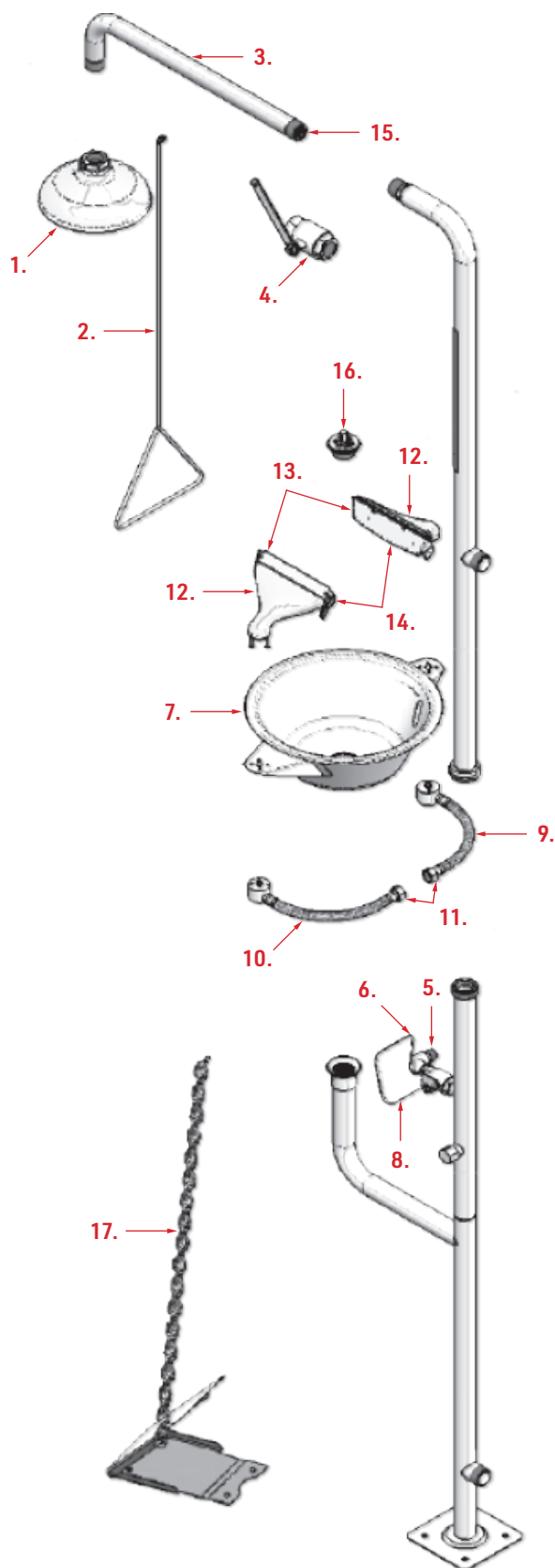
FOOT TREADLE



OPTIONAL ACCESSORIES:

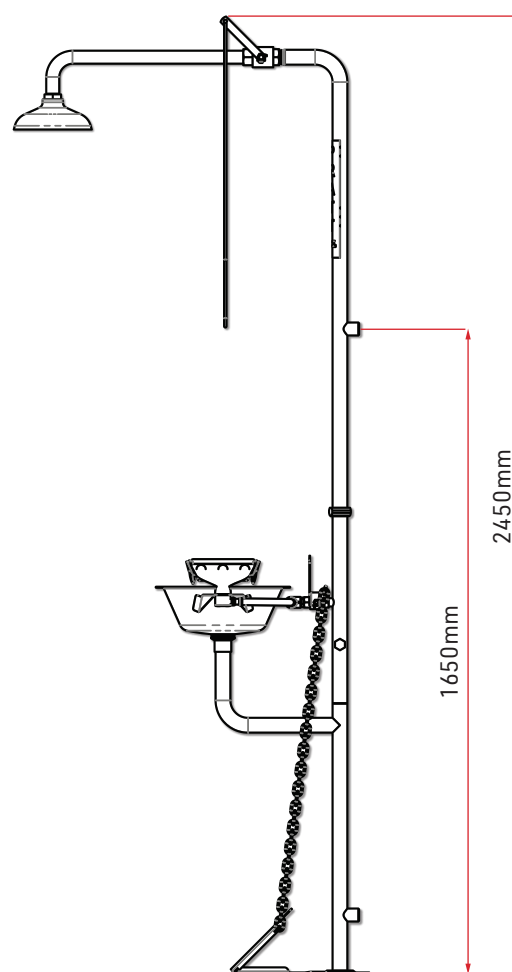
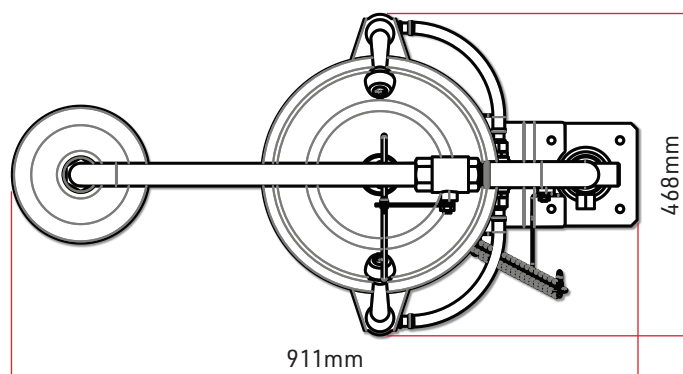
- 316 Stainless Steel Shower Head.
- Anti-Scald and Anti-Freeze Valve.
- Thermal Insulation.
- Audible and Visual Alarm Kits.
- Green Fluorescent Light Kits.
- Shower Test Kit.
- Safety Signs.
- Mounting Brackets.
- Custom Modifications.

PRATT COMBINATION SHOWER WITH TRIPLE NOZZLE EYE & FACE WASH, BOWL & FOOT TREADLE



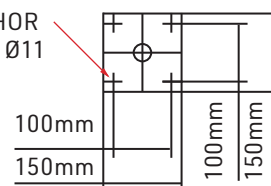
ITEM	P/NO.	DESCRIPTION	MATERIAL
1	SE870	Shower Head	AES Plastic
2	531038	Pull Rod	304SS
3	531044	Shower Arm	304SS
4	SE911	25mm Ball Valve & Lever Arm	316SS/304SS
5	531018	15mm Ball Valve	316SS
6	511328	Manifold T Assembly	316SS
7	531108	Bowl Assembly	304SS
8	531020	Push Handle	304SS
9	520130WH	Left Braided Hose & Elbow Base	304SS
10	520129WH	Right Braided Hose & Elbow	304SS
11	511700	Base Screen Filter Mesh (pk 6)	304SS
12	531131	Eye-Face Wash Nozzles (complete)	AES Plastic
13	05-1177	Aerator Screen Assembly (ea)	SS & Brass
14	531113	Dust Cover	AES Plastic
15	PFCA90	Flow Regulator & Housing	Acetyl/Polypropylene
16	531121	Drain Spud Connector & Hex Key	316SS
17	531027	Foot Treadle & Chain	304SS

PRATT COMBINATION SHOWER WITH TRIPLE NOZZLE EYE & FACE WASH, BOWL & FOOT TREADLE



INLET CONNECTION: 25mm BSPM
OUTLET CONNECTION: 25mm BSPM
SHOWER FLOW RATE: 90LPM @ 210kPa
EYE WASH FLOW RATE: 30LPM @ 210kPa
RECOMMENDED MINIMUM SUPPLY CONNECTION: 25mm
RECOMMENDED MINIMUM WATER SUPPLY: 120-135 LPM @ 210kPa

4 ANCHOR
HOLES Ø11



**FLOOR
MOUNTING
PLATE**